

Business Report from Safer Cheshire East Partnership



October 2012

Contents Page

Page 1	Cover
Page 2	Contents
Page 3	About Cheshire East
Page 4	Brief history of Cheshire East Membership of Safer Cheshire East Partnership
Page 5	Safer Cheshire East Partnership Responsibilities Partnership achievements
Page 6	Safer Cheshire East Executive Board
Page 7	Partnership Priorities
Page 8	Crime Prevention
Page 9	Preventing Offending
Page 10	Domestic Abuse and Vulnerable People/Families
Page 11	Road Safety
Page 12	Headlines Statistics and Figures
Page 13	Preventing Offending/Domestic Abuse Performance
Page 14	Financial Information
Page 15	Case Studies
Page 16	Risks and threats Work in preparation of PCC Commissioning
Page 18	Contact details

About Cheshire East

Cheshire East is the third largest unitary authority in the North West and has around 363,000 residents. The 2011 census shows that there are 159,400 occupied households within Cheshire East and 166,100 properties on the council tax register, demonstrating a high number of empty properties within the area. Our neighbours include North Staffordshire, Manchester, Cheshire West & Chester, Stockport and Warrington.

First impressions of Cheshire East are often of leafy lanes and wealthy households. Indeed as an area we host 5% of the North West workforce and 7.5% of North West businesses are based here. This can hide the reality that it is a diverse area with many differences in income, employment and health. Figures that really show this include the life expectancy across the area and in parts of Macclesfield the average life expectancy for a woman is 94, but in areas of Crewe it is 77, a huge difference of 17 years.

Household income also differs, ranging from £65,000 in parts of Macclesfield to £18,000 in parts of Crewe, however the average household income in Cheshire East is £32,600 compared to £28,400 for the UK. The average income for full time employees within Cheshire East, as of April 2011 is £26,693, compared to £21,326 in the UK and £19,958 in the North West of England.



Brief History of Safer Cheshire East Partnership

The Safer Cheshire East Partnership (SCEP) was formed in April 2009 as a result of the Local Government Review in Cheshire. Previous to this date, the area of Cheshire East had 3 safer partnerships called Crime and Disorder Reduction Partnerships (CDRPs) and these were geographically based around the old borough boundaries of Macclesfield, Congleton and Crewe & Nantwich. Whilst the existence of the partnership is prescribed in law through the Crime and Disorder Act 1998 and again through the Police and Social Responsibility Act 2010, the partnership provides an opportunity to work with the local communities to identify local issues and areas of concern.

The Safer Cheshire East Partnership is committed to ensuring that Cheshire East is a safe place to live, visit and work. The purpose of the partnership is to work closely and co-operatively with local communities, partner agencies and local groups to reduce crime and the fear of crime and anti social behaviour, target offenders and protect vulnerable people within the community and also to keep people safe on the roads of Cheshire East.

The Safer Cheshire East Partnership links with in several strategic boards such as

- Health and Wellbeing Board
- Local Adults Safeguarding Board
- Local Children's Safeguarding Board
- Children's Trust

Membership of Safer Cheshire East Partnership

Councillor Les Gilbert (chair)	Cheshire East Council
Area Commander Mick Garrihy (vice chair)	Cheshire Constabulary
Stephen Pickup	Cheshire Police Authority
Councillor Peter Nurse	Cheshire Police Authority
Simon Gibbins	Cheshire Fire and Rescue Service
Sandra Link	Cheshire Probation Trust
Judith Gibson	Cheshire East Domestic Abuse Partnership
Lorraine Guy	Cheshire Drug and Alcohol Team
Rob Allen	Wulvern Housing
Penny Kay	Cheshire Youth Offending Service
Neil Ellwood	PCC Commissioning Manager
Peter Hartwell	Cheshire East Council
Abigail Webb	Cheshire East Council
Heather Grimbaldeston	Public Health

Over the last 3 years, there have been significant developments in relation to partnership working such as co-location of multi agency teams. There is a multi-agency Navigate Team consisting of Police, Probation and housing staff working together within the same location, sharing some resources and funding to support the work of project. More recently, the Cheshire East Community Safety Team and Anti Social Behaviour Team

have re-located to the Cheshire Police Partnership Unit. This has allowed for closer working in relation to sharing information, resources and deployment to staff.

The Partnership is committed to

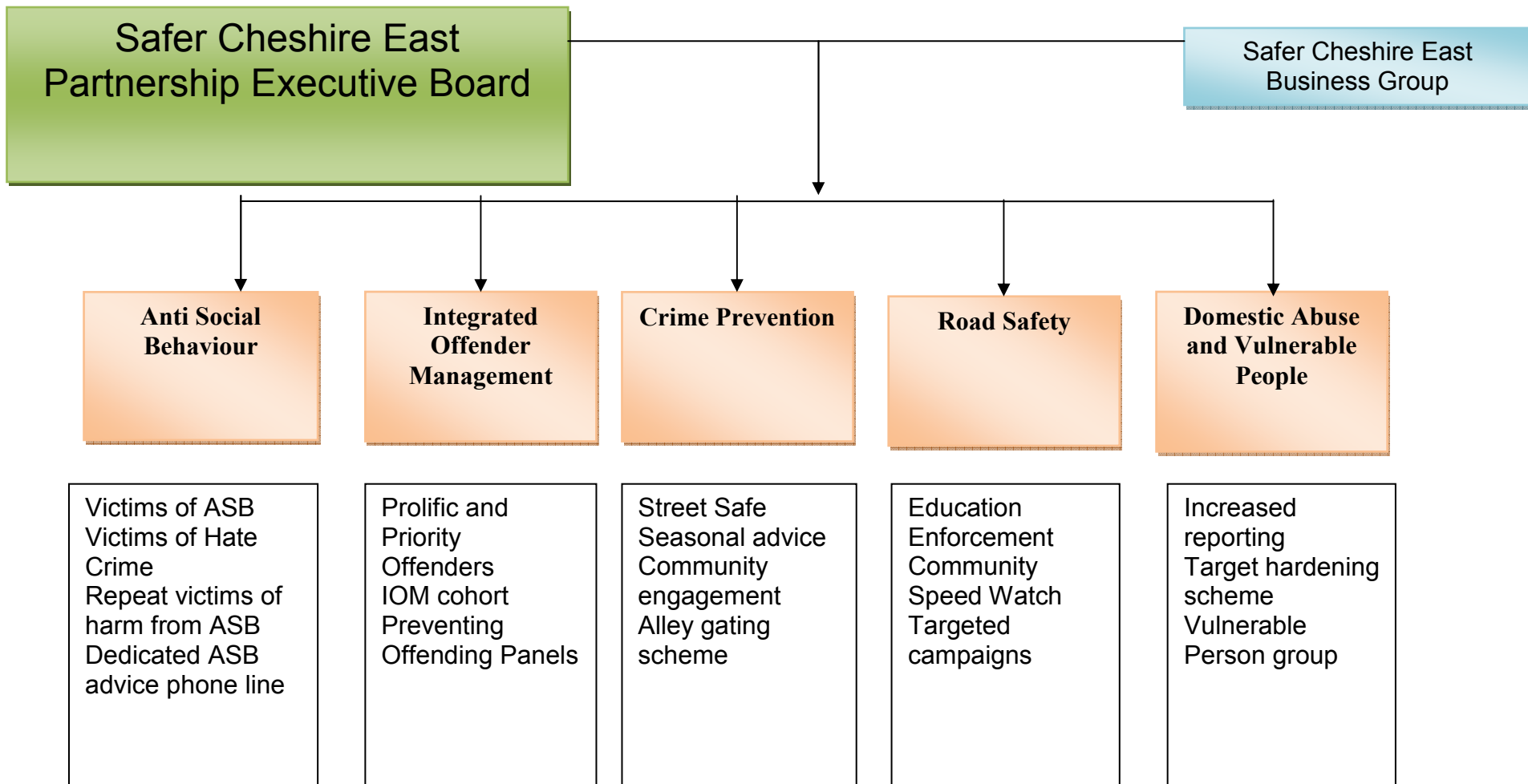
- Reducing anti social behaviour and crime and disorder across Cheshire East
- Reducing the fear of crime and engage with our communities
- Reducing the number of offenders committing more crime
- Keeping our roads safe
- Reducing domestic violence and other violence offences happening within our homes, within our neighbourhoods and within our towns
- Protecting vulnerable people/families and locations across Cheshire East

Safer Cheshire East Partnership Responsibilities

- Appropriate representation at the Safer Cheshire East Partnership meetings
- Provide a three year rolling annual strategic assessment
- Facilitate Domestic Homicide Reviews when appropriate
- Attend scrutiny committees to review performance and processes of partnership

What the partnership has achieved in 2011-2012

- 1,000 less crimes committed across Cheshire East
- 12% reduction in serious acquisitive crime
- 13% reduction in burglary dwelling
- 13% reduction in vehicle crime
- 5% reduction in anti social behaviour incidents
- 77% reduction in offending rates in prolific and priority offenders and 83% reduction in repeat offending rates
- Safeguarded 424 high risk adults with 555 children through Multi-Agency Risk Assessment Conferencing and reduced MARAC repeats by 12%



Safer Cheshire East Partnership Priorities

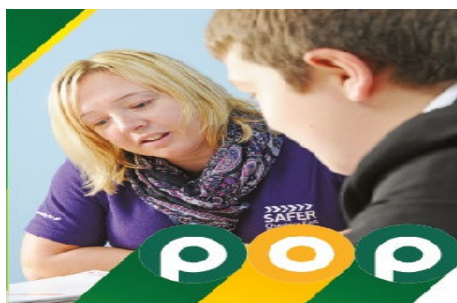
Anti Social Behaviour

Anti Social Behaviour is a real issue for many people living and working within Cheshire East. Overall the anti social behaviour figures are generally quite low compared to other areas however there are specific locations where anti social behaviour is particular high. The Anti Social Behaviour team are working closely with the police and other key agencies to reduce incidents and the key areas of work are:

- Reduce the incidents of ASB
- Reduce repeat locations of ASB
- Reduce repeat callers and victims of ASB
- To establish ARC Angel with Cheshire East to reduce alcohol related violence and ASB
- To case manage individuals at risk in Cheshire East
- To identify licensed premises with high incident of ASB and work with them and partners to take positive action to reduce incidents.

Over the last two years, the Anti Social Behaviour team have used a mediation service which has proved invaluable in relation to early intervention. The Mediation Scheme was funded by a one off Home Office Grant in 2010 and the scheme will continue until March 2013. In the cases where mediation has been used, there has been a drop of 73% (a reduction of 50) in the number of incidents reported to the police.

The 'yellow card' process in relation to dealing with young people and anti social behaviour has been in place for a number of years and has demonstrated a good success rate. During 2011-2012, the Anti Social Behaviour Team received 1,375 yellow cards of details of young people acting anti socially, of these 1,273 warning letters were sent out to parents and guardians of the young people detailing their behaviour. Only 25% of cases were issued with a second warning letter and of all the incidents reported through the yellow card process, only 5.3% of cases proceeded onto Acceptable Behaviour Contracts and no ASBOs have been issued to young people in the Cheshire East area since March 2010. In 2011-12, there has been a reduction of 5% of ASB incidents compared with the previous year.



'POP' is a brand name of the Cheshire East "Preventing Offending Panel". There are currently two panels running within the Cheshire East area. POP North (covering Macclesfield, Wilmslow, Knutsford and Congleton) and POP South (covering Crewe, Nantwich, Middlewich, Holmes Chapel, Sandbach and Alsager). These panels meet on

a monthly basis whose aims are via a multi-agency approach to prevent and tackle anti-social and offending behaviour that is displayed by young people under the age of 18 within the Cheshire East area. Versions of the POP have been running in Cheshire East areas since 2003.

There are four main priorities of the panel;

- 1) To prevent young people referred to the POP from becoming involved in further acts of Anti-Social and offending Behaviour.
- 2) To reduce the risk factors and increase the positive factors which relate to offending behaviour.
- 3) To ensure that an education provision is available to young people at risk of offending and Anti-Social Behaviour.
- 4) To ensure that young people and their families have access to services at the earliest opportunity

There are a number of interventions that can be considered as a result of a young person being referred into the panel. Our main referrals are covered by the following interventions:

- Youth Engagement Service (YES) – managed by YOS
- Family Intervention Project (FIP) – managed by YOS
- Safer Cheshire East ASB Team - (Acceptable Behaviour Discussions/Acceptable Behaviour Contracts, etc)
- Targeted Youth Support - (Cheshire East Council)
- Deter Young Offenders” process – managed by YOS and YOS Police Officers

Crime Prevention

Incidents of crime fluctuate across the area and also through the seasons and this has a huge impact on the people living, shopping or socialising in Cheshire East. The Crime Prevention Panel which is a multi agency group meet every 2 months and the aims of the group are to

- Reduce incidents of crime
- Reduce the fear of crime
- Engage with local communities
- Provide crime prevention advice



Crime Prevention Project – Brownie and Cub Poster Competition

StreetSafe project is a multi agency approach to dealing with crime prevention, public consultation and reassurance. The project is run through Cheshire East Council Community Team and the aim of the scheme is to target specific streets with the Cheshire East area and door knock on property and ask them questions in relation to the Safer, Stronger, Cleaner and Greener agenda. The project allows an opportunity for local residents to express their views as to what it is like for them to live in that area. The project follows the 'We asked, you said, we did' pattern and every resident receives a copy of a summary as to what the results demonstrated, what agencies were tasked with actions and when it should be completed.

The event takes place every 6-8 weeks and areas are chosen depending on issues relating to anti social behaviour, crime, demographics of the area (i.e. increased numbers of older people living in the area).

Another project that tackles crime prevention is the Nominated Neighbour Scheme which the partnership is actively promoting, particularly in streets where predominately older people and more vulnerable people live. The scheme is designed to reduce door step crime, distraction burglary and bogus callers by giving the resident an option to have caller 'vetted' by a nominated neighbour of their choice.

Seasonal crime prevention advice is provided throughout the year in various sources such as leaflets, information on the internet (www.cheshireeast.gov.uk/safer), community events and a seasonal project the partnership is involved in is the 'Not In My Neighbourhood' week which coincides with Bonfire and Halloween week. Through multi agency working, the number of anti social behaviour incidents has dropped by 9.1% and alcohol related crimes have dropped by 6.7% during this period compared with 2010-11 police data.



StreetSafe Briefing

Preventing Offending

'NAVIGATE' is the brand name of the pan Cheshire Integrated Offender Management Scheme. The Cheshire East scheme, from its inception, has been consistently successful in reducing re-offending. Cheshire East piloted the original PPO scheme which has subsequently rolled out across Cheshire and pivotal to the success of the scheme is the effective multi-agency working and the commitment of all staff to work alongside those offenders committing priority crimes within the area; reducing not only re-offending but also the fear of crime within local communities. One of the main reasons for its continual

success is the evolution of the scheme over the years; taking into account current trends and building on the successes of 'what works' to reduce offending. The Agencies in Cheshire East have worked together to develop and implement a very robust and 'streamlined' scheme in line within the area wide initiative but building upon our existing successes. This scheme also targets repeat offenders; accessing further hard to reach groups in order to tackle offending and provide access to relevant support. The Navigate team are also committed to annual training to ensure that all staff from all agencies is kept up-to-date with current policies and practices and to allow for the sharing of best practice and areas for development/discussion.

Domestic Abuse & Vulnerable People/Families

Domestic Abuse Services are accountable to and funded by a range of partners and boards. This includes prevention and early intervention work but SCEP's specific contribution ensures that high risk survivors of domestic abuse and their families are safeguarded through provision of effective

MARAC services (MARAC = Multi-Agency Risk Assessment Conferencing) as part of a Co-ordinated Community Response.

This involves ensuring that the MARAC process is accessible to all who need it regardless of background, that agencies work together in the most effective way to increase safety and so prevent repeat referrals, that the process is well co-ordinated and administered and that 'aftercare' services empower victims to recover and resist future abuse.

MARAC is overseen by a Steering Group headed by the Detective Inspector of the Public Protection Unit and with a membership including all key players in addressing high risk domestic abuse – Probation, IDVA service, Health, Children's and Adults Safeguarding. This group is accountable to the Strategic Management Group of Cheshire East Domestic Abuse Partnership which is chaired by BCU Commander Mick Garrihy.

The Partnership is in the process of connecting the range of domestic abuse funding streams to commission 'whole family' work which includes non-statutory interventions to address the behaviour of those who perpetrate abuse and to improve safeguarding responses to families are affected by the most harmful coincidence of factors – domestic abuse, substance misuse and mental ill health.

A new multi agency initiative has recently been launched to help 'Troubled Families' within Cheshire East. These criteria are that families

- Are involved in youth crime or anti social behaviour
- Have children who are regularly truanting or not in school
- Have an adult on out of work benefits
- Cause high costs to the public purse

The criteria include a large degree of local discretion so that local agencies can target the programme at the families that need it the most.

The programme is based on proven intervention techniques such as Family Intervention Projects that deliver similar results. Common features of this kind of work include

- An intense whole family approach, rather than dealing with family members individually
- A single key worker or small team assigned as a main point of delivery for each family

- Different agencies such as the police, social services, schools and health visitors working together with a single plan rather than on their own.

Cheshire East will employ 10 family key workers who will manage a caseload of the following

YEAR	TOTAL
2012-13	163
2013-14	244
2014-15	82
Total	489

The newly appointed staff will be managed by Youth Offending Service as part of the wider Family Intervention Programme Team.

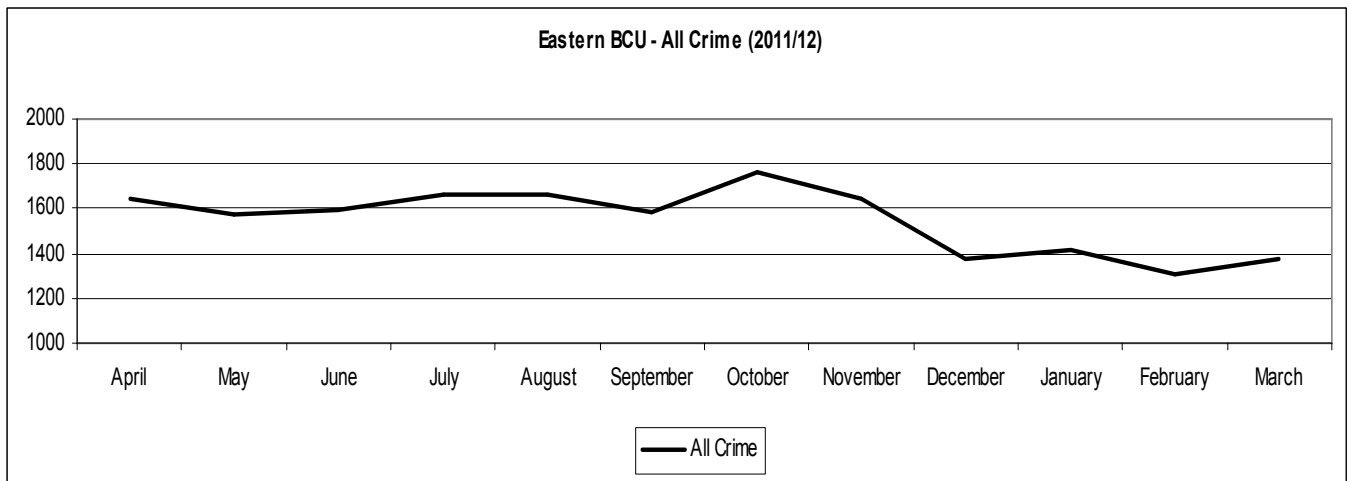
Road Safety

An established multi-agency delivery group focuses on Education, Enforcement and Road Safety Engineering and which will include the following activities

- Delivered a wide range of educational and awareness programs including Driver Engagement Days, Motorcycle Rider Engagement Days, Drive Survive Courses, Cheers BAR, Occupational Road
- User events, School/College events and activities etc
- Provided heavily subsidised training courses to drivers and motorcyclists. (Pass+ and Life Advanced Motorcycle Courses)
- Delivered numerous high profile campaigns such as Christmas drink/drug driving, Winter Driving, Child Restraint Systems, Road Safety Week etc
- Supported delivery of free cycle training to year 6 pupils and also issued free bike lights to young cyclists.
- Implemented road safety engineering activities to reduce the risk in identified accident hotspot areas.
- Carried out enforcement activities including targeted police patrols, community speed watch and deployment of high profile speed indication devices.



Headlines Statistics and Figures



Crime/Incident	2010-2011	2011-2012	2012-2013
All Crime	19,623	18,625	Maintain or reduce
Most Serious Violent Crime	100	107	Maintain or reduce
Serious Acquisitive Crime	2,896	2,553	Maintain or reduce
Burglary Dwelling	1,168	1,019	Maintain or reduce
Vehicle Crime	1,654	1,436	Maintain or reduce
Robbery	74	98	Maintain or reduce
Criminal Damage	3,868	3,725	Maintain or reduce
Assault with less serious injury	1,752	1,715	Maintain or reduce
Anti Social Behaviour incidents	15,716	14,940	Maintain or reduce

Preventing Offending

Offending *(based on date of offence)*

Baseline number of convictions	Actual convictions during nomination	Difference between baseline and actual	% impact	Reduction / Increase in convictions
740	169	571	77.16%	Reduction

Repeat Offenders

Offending *(based on date of offence)*

Baseline number of convictions	Actual convictions during nomination	Difference between baseline and actual	% impact	Reduction / Increase in convictions
141	23	118	83.69%	Reduction

Below also provides a flavour of the areas and types of work we undertake with our Prolific and Priority Offenders:

Prolific Priority Offenders

The pathway outcomes required for this group are as follows:

'Drugs', 'Attitudes, Thinking and Behaviour' and 'Accommodation' are the three most problematic areas across the whole of the cohort:

86% (51/59) of the cohort have 'Drugs' as a pathway for improvement

85% (50/59) of the cohort have 'Attitudes, Thinking and Behaviour' as a pathway for improvement

66% (39/59) of the cohort have 'Accommodation' as a pathway for improvement

Cheshire East's current cohort for those on the Navigate scheme are as follows:

Crewe (including Nantwich, Alsager and Sandbach) - 33 PPO's and 11 RO's

Macclesfield (including Wilmslow, Knutsford and Congleton) - 31 PPO's and 5 RO's

Total: 64 PPO's and 16 RO's (cohort 80)

These figures often fluctuate due to successful completions and new referrals but we have the capacity to work with a cohort of 100 if required.

Domestic Abuse

In the year April 2011- March 12:

- 424 adults with 555 children were subject to Multi-Agency Risk Assessment Conferencing (these are the highest risk citizens of Cheshire East, representing approximately 10% of all who suffer domestic abuse)
- The rate of reported high risk victimisation in Crewe is x 10 that in Poynton, with Macclesfield Local Area Partnership showing the 2nd highest rate
- Police attended 1057 domestic abuse incidents and 3619 domestic incidents with an arrest rate of 37% for domestic abuse incidents and a repeat rate of 23%

- Mental ill health is a factor for both victim and perpetrator in approximately ¼ all cases
- Rates of drug and alcohol misuse are x2 high among perpetrators as compared to victims and are much higher among repeat cases

Road Safety

The Department of Transport (DfT) confirms that road deaths have increased in 2011 for the first time since 2003. The increase is confirmed in the DfT's annual road casualty report, 'Reported Casualties in Great Britain: 2011 Annual Report, published on 27th September.

	killed	serious	KSI	Slight	All
Cheshire East	12	230	242	1,325	1,567

Perception survey

Time	% of people who feel safe
In day	83.14
At night	41.42
In the house	80.57

Information taken from the StreetSafe Initiative between January 2011 and May 2012. Figures have been averaged across Cheshire East.

Financial Information

The Safer Cheshire East Partnership receives funding from a number of sources, one of these being £150,000 from a Home Office Grant and the other from the Police and Fire Service element of the Second Home Taxation. The total amount of funding to the partnership is £189,000. The money is solely used as a contribution towards neighbourhood policing within the Cheshire East area however it will be the £150,000 element of the funding that will be given to the new Police and Crime Commissioner.

Other funding is received from Cheshire East Council which pays for partnership activities

Part time ASB post	£16,000
Contribution to Cheshire East Domestic Abuse Partnership	£40,000
Probation staff x 2 (Navigate team)	£38,000
Cheshire Drug and alcohol Team worker	£20,000
Sexual Assault Referral centre worker contribution	£16,268

Case Studies

The Safer Cheshire East Partnership has numerous examples of effective multi agency problem solving and many of these successes have been driven through the tasking and co-ordination process. The process of Tasking & Coordination is a continuous one, moving from strategy – the main areas to target which would create the need to look at the problem in more detail, through to delivery – moving from a wide to narrow picture, pointing the group towards specific actions

The eight stage process is as follows:

- Strategic assessment - identifies emerging issue. Recommended to be dealt with as a priority.
- Intelligence Requirement – Recommends the need to gather information to identify the underlying causes of the issue or problem.
- Nomination – Either from individual agency or via analysis.
- Tactical assessment – A picture of the problem is included in the tactical assessment and clear patterns emerge in one area. Recommendations are then made for intervention, prevention, intelligence and enforcement.
- Problem and subject profile – this profile, developed by the Partnership analyst, describes the problem in detail, recommends intervention, prevention, intelligence or enforcement.
- Partnership T & C – The group will discuss whether the problem in that area is significant and requires the resources of specific partner agencies. The T & C chair will, if necessary, request multi-agency resources.
- Results analysis – this is commissioned by T & C. It is necessary to know whether the issue has been resolved or displaced, and how effective were the responses.
- Information – This information is the used to develop strategic assessments, tactical assessments, problem profiles and subject profiles.

Please see appendices for detailed case studies.

Risks and threats

The following posts or services are funded through home office grants, community safety grants or through partnership agreements by a single agency.

Contribution to neighbourhood policing	£188,800
Part time ASB post	£16,000
Contribution to Cheshire East Domestic Abuse Partnership	£40,000
Probation staff x 2 (Navigate team)	£38,000
Cheshire Drug and alcohol Team worker	£20,000
Sexual Assault Referral centre worker contribution	£16,268
Mediation Service (three year contract)	£32,000
Safe target hardening service	£10,000

Work in preparation of PCC

Over the last 2 years, the Safer Cheshire East Partnership has been working closely with the other three Community Safety Partnerships within Cheshire to ensure that the partnership is as effective as possible and also to try and reduce duplication of activities and looks at ways in which services and resources can be collaborated across the area. Some of the areas reviewed included anti social behaviour and domestic abuse procedures.

More recently, the Safer Cheshire East Partnership formed a Police and Crime Commissioner Group which consists of Cheshire East Council, Police, Fire, Probation and Youth Offending Service and as part of this group, a review was conducted of all the priorities across Cheshire East to ensure that the resources are targeted in the correct areas.

Commissioning

Safer Cheshire East Partnership has a number of opportunities in which commissioning services would not only benefit the partnership but would be cost effective if commissioned across the Cheshire Wide area.

The Mediation service is a valuable resource that has been used within the community safety and the anti social behaviour team for the last 2 years. Through the use of early intervention that the Mediation Service offers, there has been significant reduction in calls to service on the Police and Cheshire East Council Staff. In August 2012, as part of a Police and Crime Commissioner Review, the results showed the following:-

- **24** cases referred to Mediation Service between December 2010 and July 2012
- **10** cases resolved through both party, and one party engagement (**41.6%**)
- **8** cases not resolved through disengagement of one/both parties or non-agreement between parties (**33.3%**)
- **6** cases were closed by either by the mediation worker or by the parties due to either

legal involvement or other personal reasons by one or both of the party's e.g. ill health etc. **(25%)**

- **73** incidents occurred before Mediation Service and only 20 incidents occurred after Mediation intervention **(73%)**
- There is currently **9** 'open' cases which are not included in these figures

The approximate cost of two Police Officers attending an anti social behaviour incident and five hours of an Anti Social Behaviour Co-ordinators time to deal with the incident costs £225.

	Number of incidents before Mediation Intervention	Number of incidents after Mediation Intervention
	73	20
Approximate cost of PC and coordinator time (in typical cases)	£16,529	£4,501

The table above clearly demonstrates a cost saving to both the police and the local authority if mediation is used to deal with anti social behaviour incidents or neighbour disputes.

A target hardening service called 'Safe' has been used across Cheshire East for a number of years and primarily works with victims of domestic abuse and burglary. Studies have proven that the chance of repeat victimisation is increased within the first 48 hours after the initial incident. The Safe scheme provides the victims of domestic abuse and burglary a rapid response to target harden the property to ensure the risk of repeat victimisation is minimal. The service also provides crime prevention and reduction advice and re-assurance to the victim who, at that particular time, is quite vulnerable within the community.

Currently Cheshire East Council fund £10,000 a year for this service however in previous years, this contribution has come from the Home Office Grant that has been given to the Safer Cheshire East Partnership. This would be a good opportunity for the service to be commissioned to benefit victims across Cheshire.

For further information please contact

Abigail Webb – Community Safety Development Manager
Cheshire East Council/Safer Cheshire East Partnership
Abigail.webb@cheshireeast.gov.uk
0300 123 5030

www.cheshireeast.gov.uk/safer